

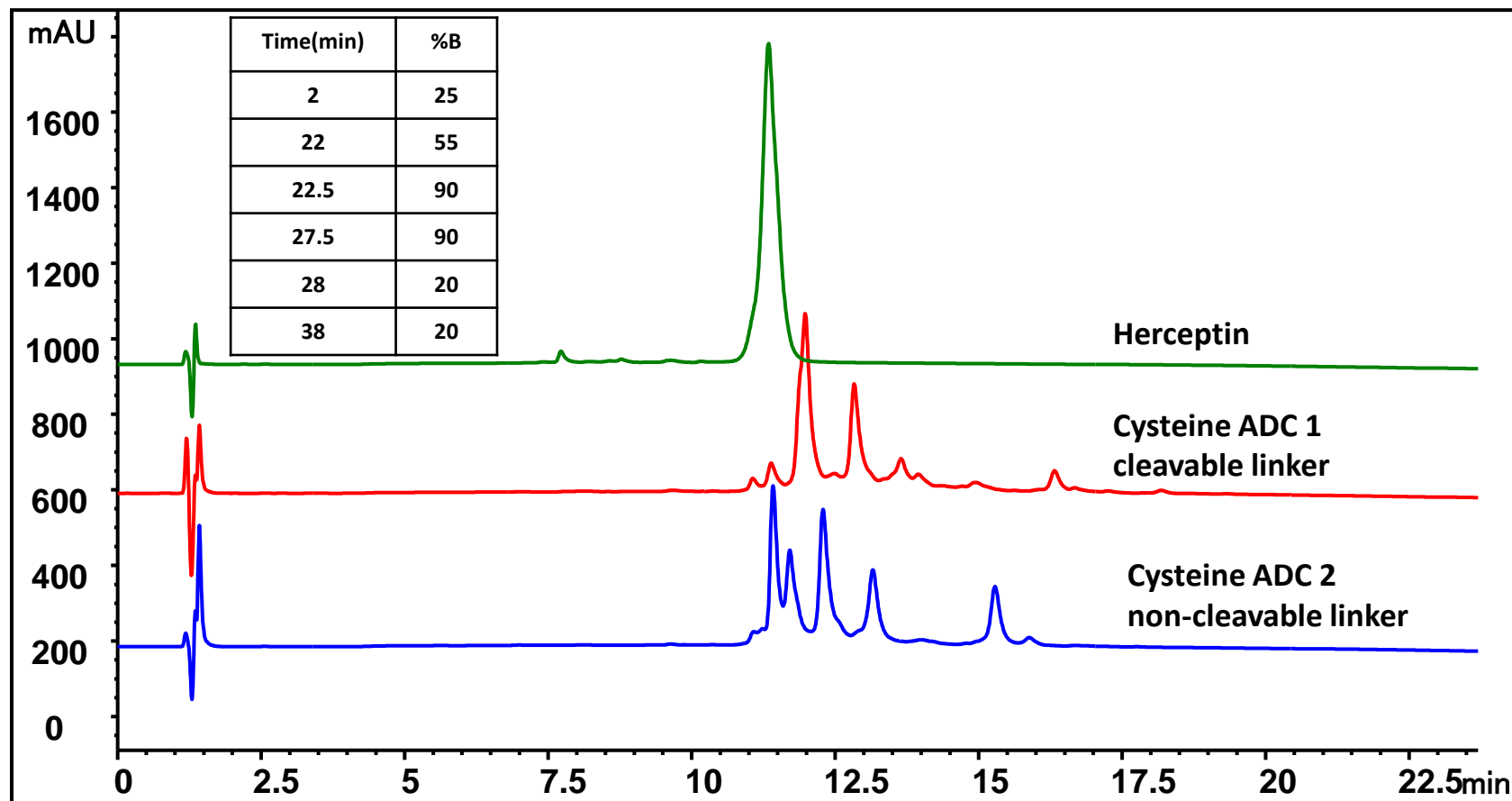
## MAb Herceptin and its ADCs Separation on PolyRP-1000

Column: PolyRP-1000 (5  $\mu\text{m}$ , 1000  $\text{\AA}$ , 4.6 x 100 mm);

Mobile phase: A: 0.1% TFA in water; B: 0.1% TFA in 100% ACN;

Flow rate: 1.0 mL/min; Detector: UV 210 nm; Column temperature: 80  $^{\circ}\text{C}$ ;

Sample: Herceptin and ADCs 1 mg/mL diluted in 0.1% TFA; Injection volume: 10  $\mu\text{L}$



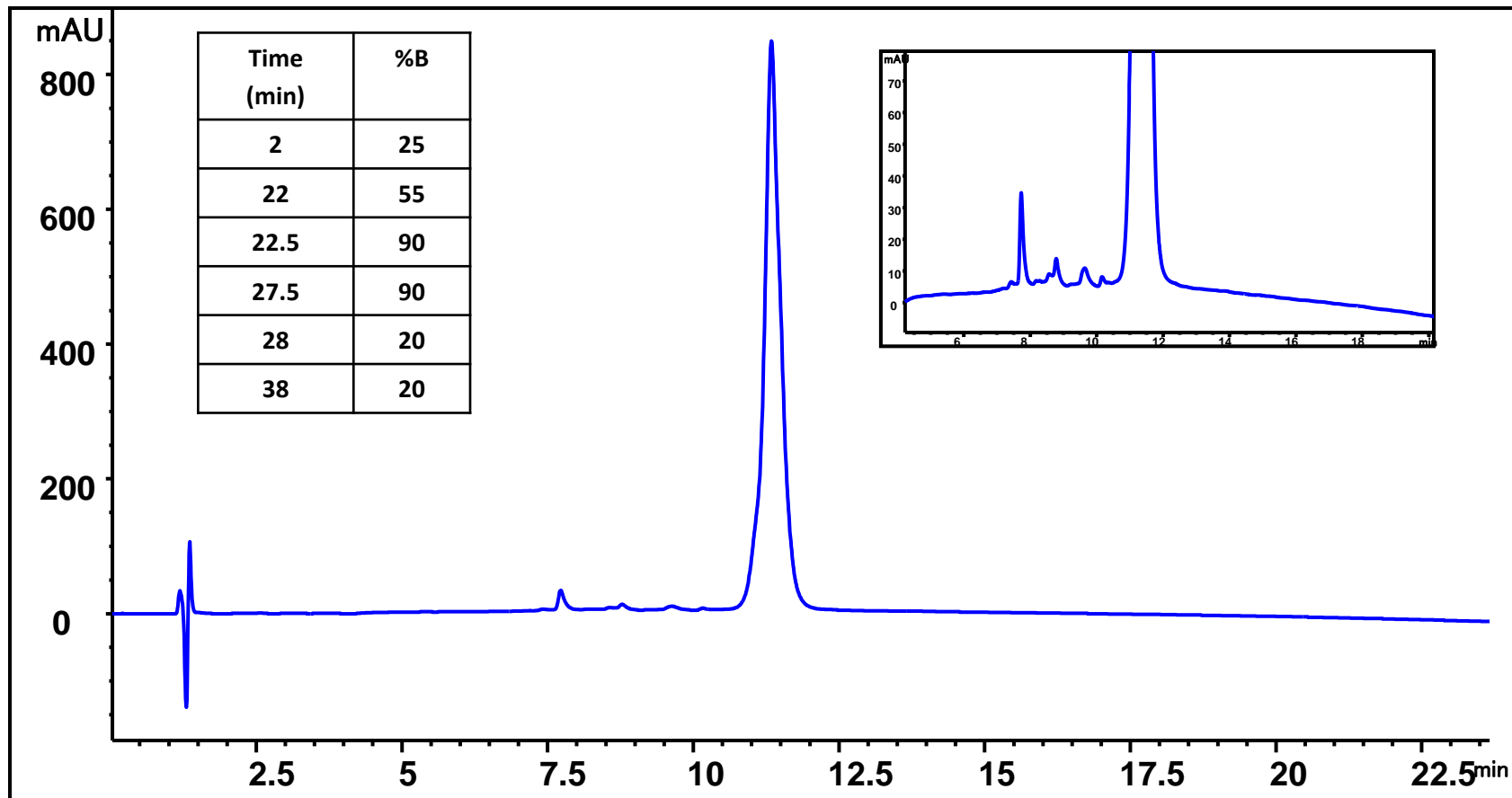
## Monoclonal Antibody Herceptin Separation on PolyRP-1000

Column: PolyRP-1000 (5  $\mu\text{m}$ , 1000  $\text{\AA}$ , 4.6 x 100 mm);

Mobile phase: A: 0.1% TFA in water; B: 0.1% TFA in 100% ACN;

Flow rate: 1.0 mL/min; Detector: UV 210 nm; Column temperature: 80  $^{\circ}\text{C}$ ;

Sample: Herceptin 1 mg/mL diluted in 0.1% TFA; Injection volume: 10  $\mu\text{L}$



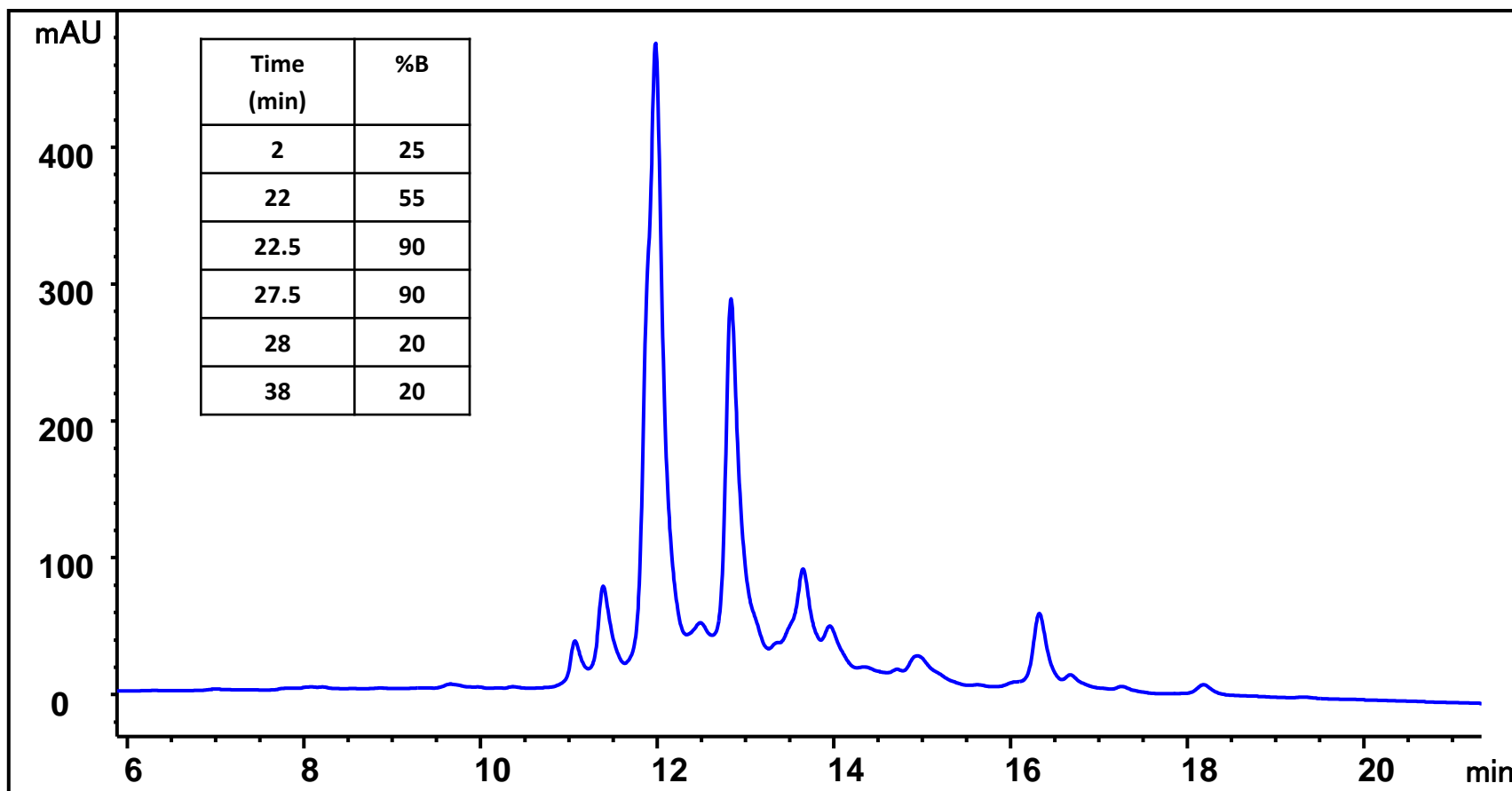
## Herceptin-ADC 1 with Cleavable Linker Separation on PolyRP-1000

Column: PolyRP-1000 (5  $\mu$ m, 1000  $\text{\AA}$ , 4.6 x 100 mm); SN: 53198 ;

Mobile phase: A: 0.1% TFA in water; B: 0.1% TFA in 100% ACN;

Flow rate: 1.0 mL/min; Detector: UV 210 nm; Column temperature: 80  $^{\circ}$ C;

Sample: Herceptin-ADC1 1 mg/mL diluted in 0.1% TFA; Injection volume: 10  $\mu$ L



## Herceptin-ADC 2 with Non-cleavable Linker Separation on PolyRP-1000

Column: PolyRP-1000 (5  $\mu\text{m}$ , 1000  $\text{\AA}$ , 4.6 x 100 mm);

Mobile phase: A: 0.1% TFA in water; B: 0.1% TFA in 100% ACN;

Flow rate: 1.0 mL/min; Detector: UV 210 nm; Column temperature: 80  $^{\circ}\text{C}$ ;

Sample: Herceptin-ADC2 1 mg/mL diluted in 0.1% TFA; Injection volume: 10  $\mu\text{L}$

