

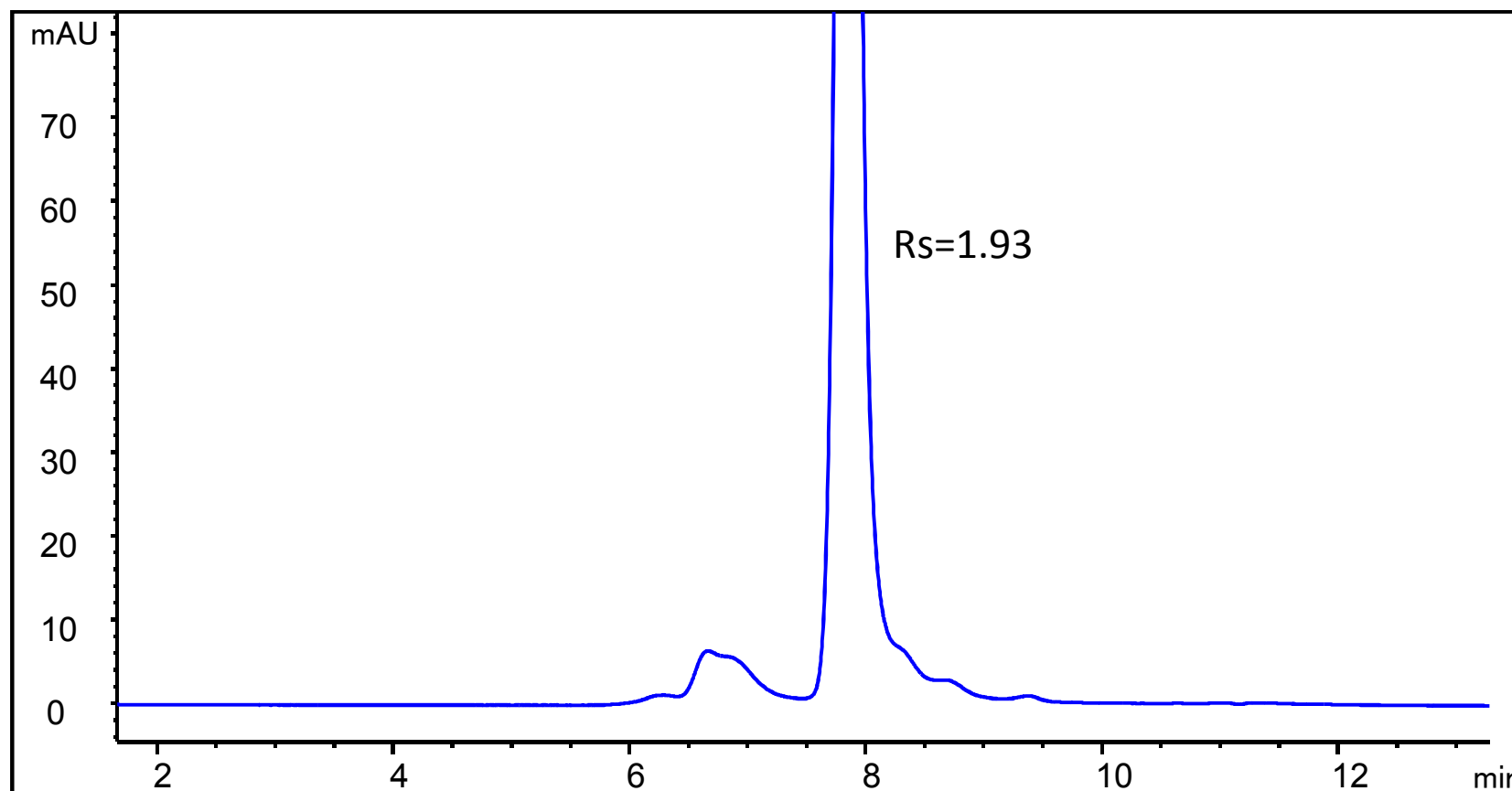
## Herceptin Analysis on Zenix™ SEC-300 ( 7830 )

Column: Zenix™ SEC-300, ( 3  $\mu\text{m}$ , 300 Å, 7.8 x 300 mm)

Mobile phase: 150 mM phosphate buffer

Flow rate: 1 mL/min; Detector: UV 280 nm; Column temperature: 25 °C

Injection volume: 10  $\mu\text{L}$ ; Samples: Herceptin 2.34 mg/mL



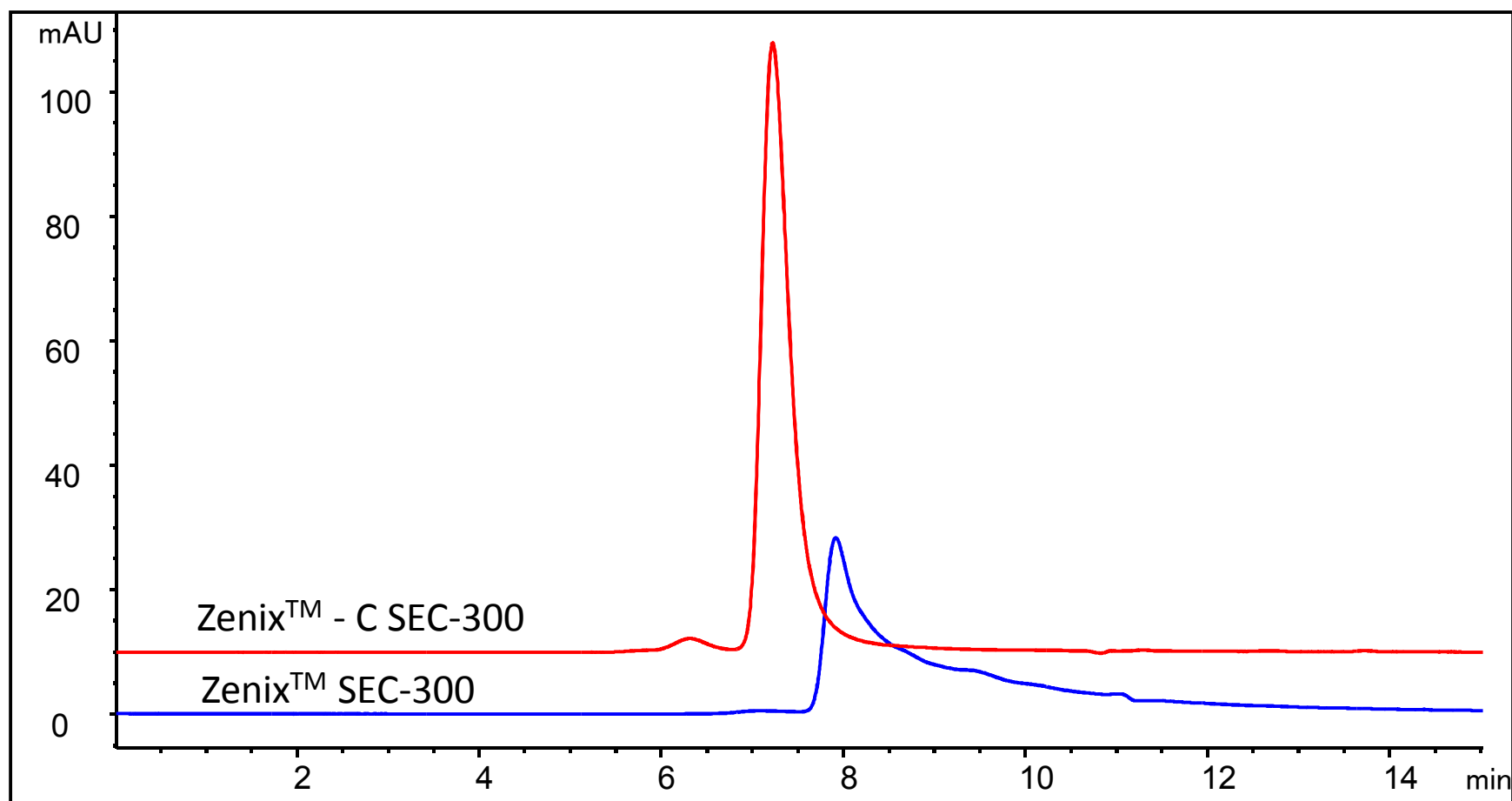
## Herceptin Lysine ADC Analysis on SEC-300 ( 7830 )

Column: Zenix™ SEC-300, Zenix™ - C SEC-300 ( 3 μm, 300 Å, 7.8 x 300 mm)

Mobile phase: 150 mM phosphate buffer

Flow rate: 1 mL/min; Detector: UV 280 nm; Column temperature: 25 °C

Injection volume: 10 μL; Samples: Herceptin lysine conjugate 2.05 mg/mL



# Herceptin Lysine ADC Analysis on SEC-300 ( 7830 )

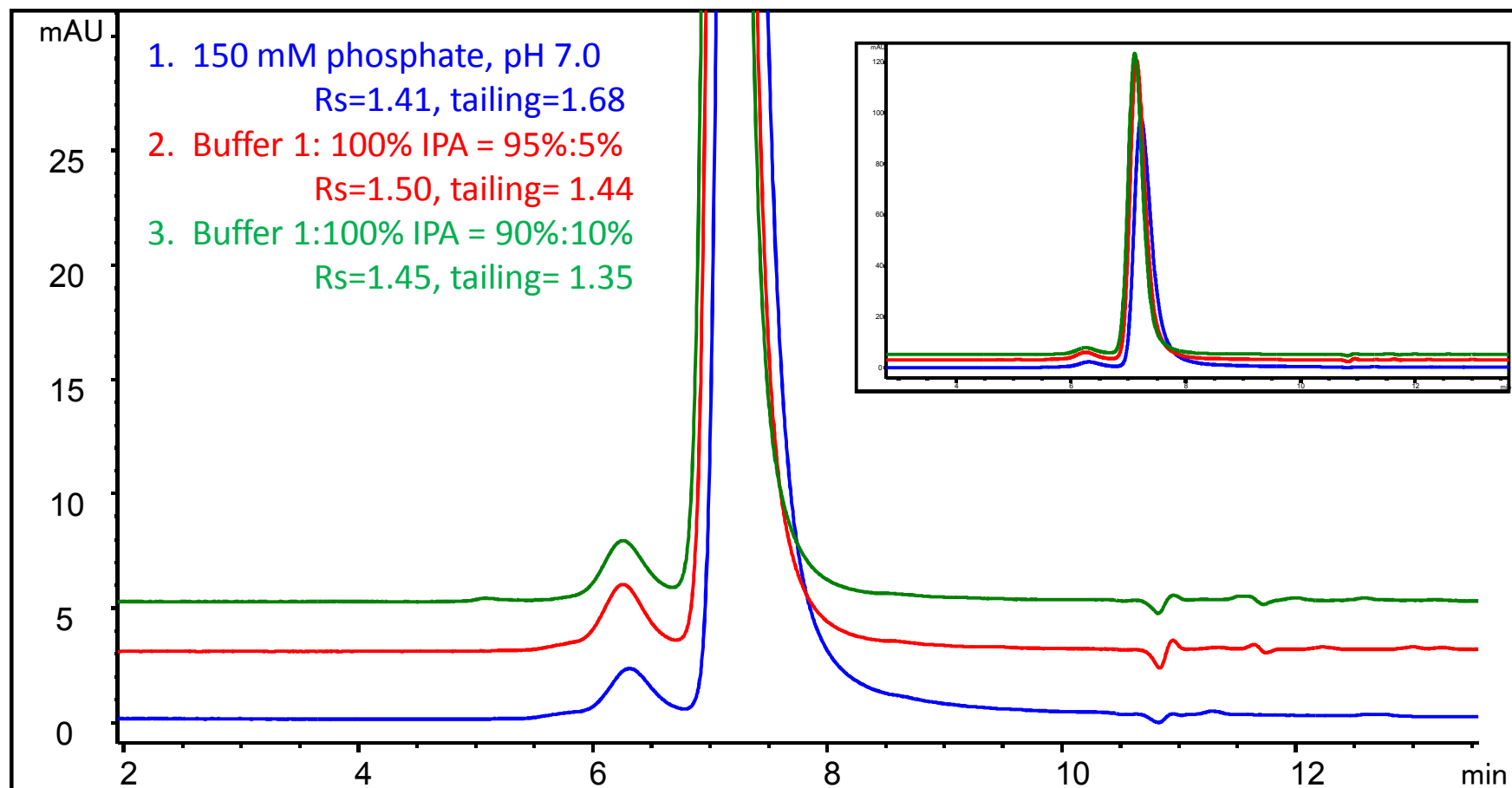
ZM1018

Column: Zenix™ - C SEC-300 ( 3 μm, 300 Å, 7.8 x 300 mm)

Mobile phase: as indicated

Flow rate: 1 mL/min; Detector: UV 280 nm; Column temperature: 25 °C

Injection volume: 10 μL; Samples: Herceptin lysine conjugate 2.05 mg/mL



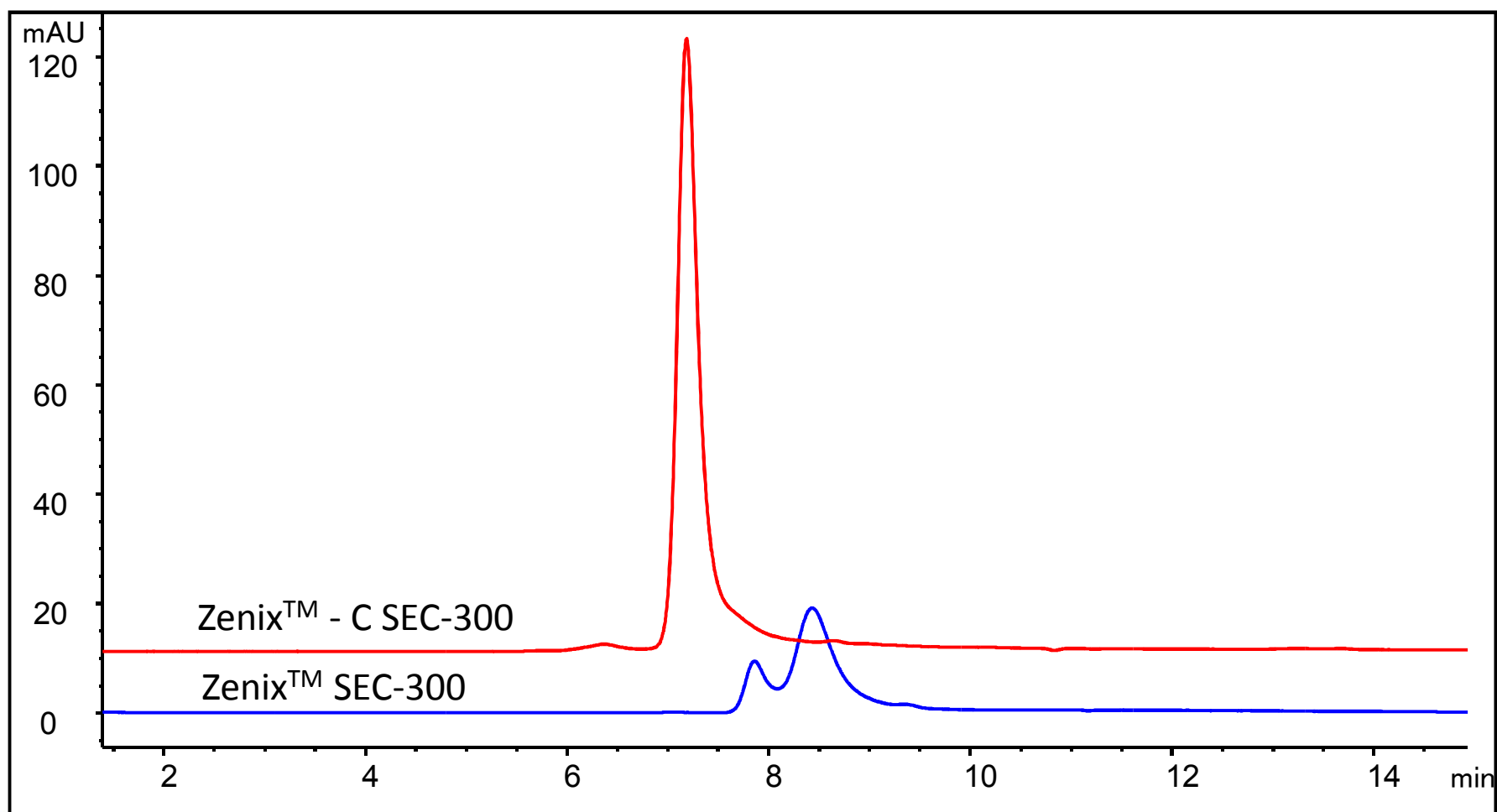
## Herceptin Cysteine ADC (cleavable linker) Analysis on SEC-300 ( 7830 )

Column: Zenix™ SEC-300, Zenix™ - C SEC-300 ( 3 μm, 300 Å, 7.8 x 300 mm)

Mobile phase: 150 mM phosphate buffer

Flow rate: 1 mL/min; Detector: UV 280 nm; Column temperature: 25 °C

Injection volume: 10 μL; Samples: Herceptin Cysteine ADC with cleavable linker 2.5 mg/mL



# Herceptin Cysteine ADC Analysis on SEC-300 ( 7830 )

ZM1018

Column: Zenix™ - C SEC-300 ( 3 μm, 300 Å, 7.8 x 300 mm)

Mobile phase: as indicated

Flow rate: 1 mL/min; Detector: UV 280 nm; Column temperature: 25 °C

Injection volume: 10 μL; Samples: Herceptin Cysteine ADC with cleavable linker 2.5 mg/mL

